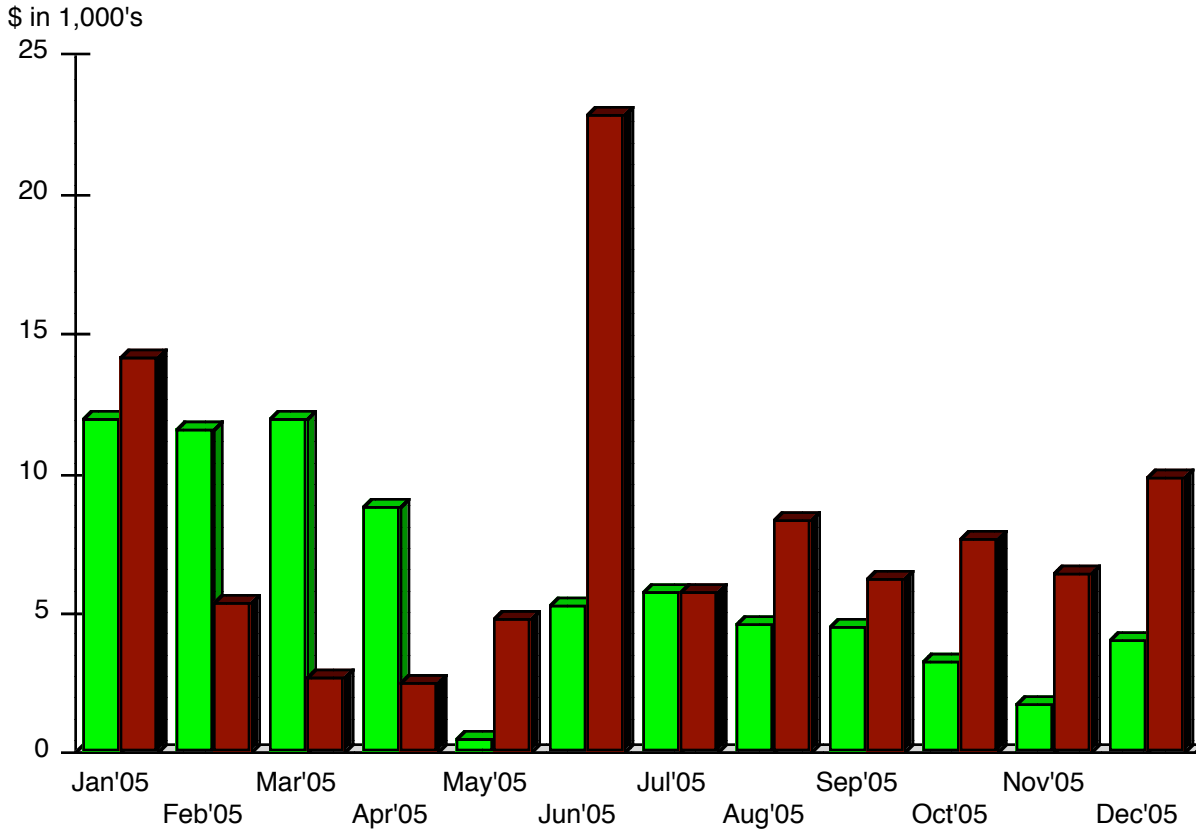
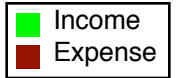
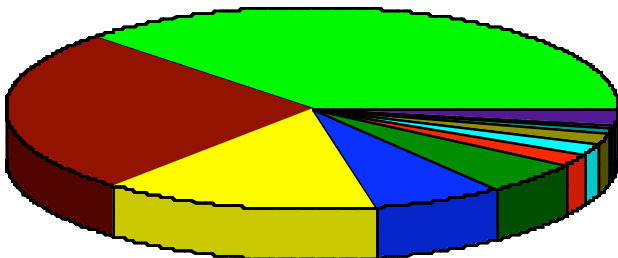


Income and Expense by Month
Jan - Dec '05



Expense Summary
Jan - Dec '05

6100 — Professional Fees	%37.70
5010 — Health Fund member grants	26.35
6130 — Contract Labor	14.75
6160 — Rent	6.92
6190 — Office Supplies	5.41
6150 — Travel & Ent	2.07
6180 — Insurance	1.96
6170 — Telephone	1.79
6210 — Dues & Licenses	0.74
6200 — Community Grants Awarded	0.62
Other	1.71
Total	\$96,906.99



By Account